

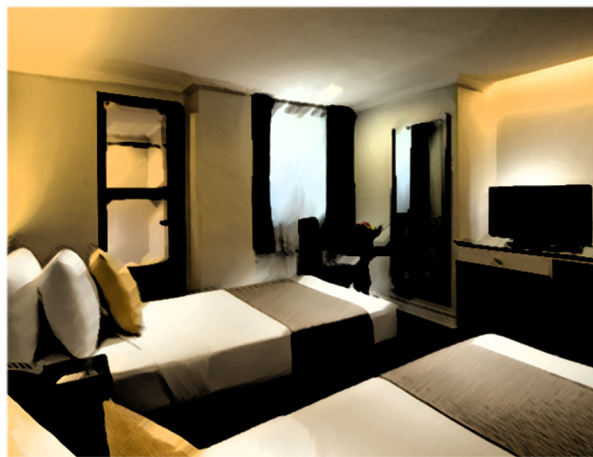
**METROCENTRE TAGBILARAN**  
 3Days/2Nites Package Plus  
 BOHOL COUNTRYSIDE TOUR WITH LUNCH



from  
**Php7,390**  
 per person  
 on Twin/Double  
 Superior Room

**INCLUSIONS**

- 2Nites Stay with Daily Plated Breakfast
- Tagbilaran Airport/Seaport Pick Up and Drop Off
- BOHOL COUNTRYSIDE TOUR with Lunch at Loboc River Cruise
- Entrance at the Club Sphere & Atmo Bar (except on sponsored nights/events & days off)



**PROMO VALID UNTIL MARCH 2018 EXCEPT SUPER PEAK DATES**

**PRICES PE PERSON IN PHILIPPINE PESO**  
**3DAYS/2NITES PACKAGE**

ROOM TYPE	TWIN SHARE	TRIPLE SHARE	QUAD SHARING
SUPERIOR	Php7,390	N/A	N/A
FAMILY	N/A	Php7,860	Php6,988

**NOTES:**

- **BOHOL COUNTRYSIDE INCLUSIONS:** Blood Compact Shrine ▪ Tarsier-viewing (Tarsius Syrichta) ▪ Passby Mahogany Man-made Forest ▪ Chocolate Hills Adventure Park (**Rides NOT INCLUDED**) ▪ River Cruise with Buffet Lunch ▪ Baclayon Church and Museum ▪ Sta. Monica Church ▪ Use of Air-conditioned Transportation ▪ Licensed Tour Guide ▪ Entrance Fees
- Manila-Tagbilaran-Manila Air Tickets NOT INCLUDED in the Package
- All rates are per person in Philippine Peso
- Rates are subject to space availability upon booking
- Rates are subject to change without prior notice
- Rates are NOT VALID during Christmas, New Year, Chinese New Year, Holy Week